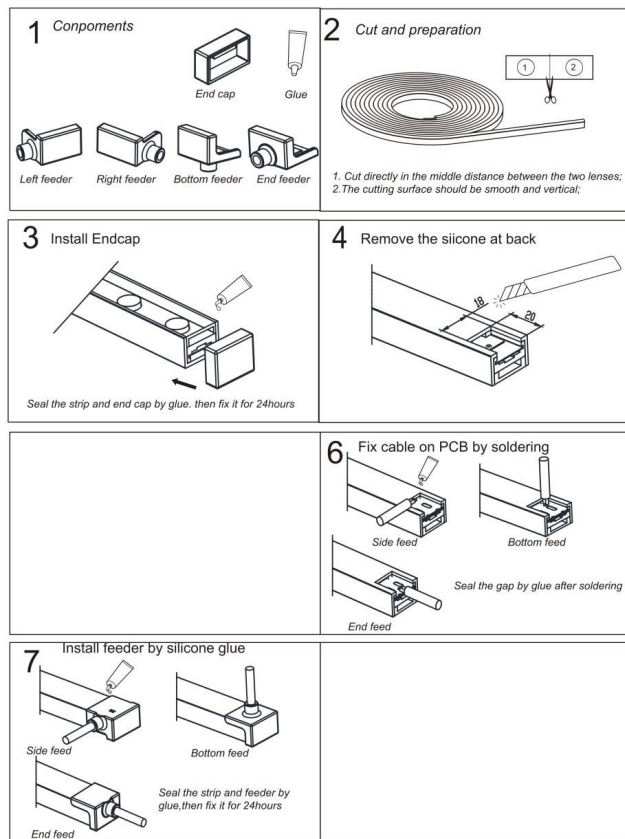




- Installation and wiring of luminaire must be in accordance with all applicable local codes.
- Installation, inspection, and maintenance of luminaires should be performed by a qualified electrician.
- DO NOT make or alter any open holes in the luminaire. Do not modify the luminaire.
- DO NOT install damaged product.
- Make sure electrical power is OFF before and during installation and maintenance.
- Make sure the equipment is properly grounded.
- Make sure the supply voltage is same as the rated fixture voltage.

### 3D Neon Cutting and Connection Guide



### Installation Guide



For assembly of LED flex neon longer than 2m carefully handling with min. 2 employees is necessary. The electrical circuit could be damaged if bending radius is too small. Stainless steel core and resin can not avoid any damage by inadequate handling.